

Village of Wellington

Material Load dropped off on 4/15/20

Audited on 4/16/20

Wednesday

Truck# 2246

Route# 528

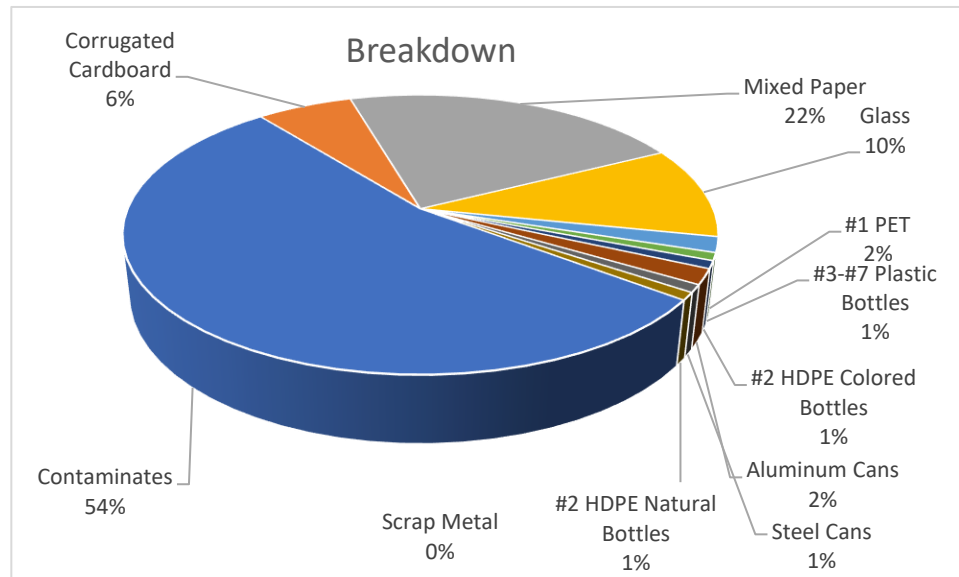
Material	Sample	Total Load	
	Pounds	Pounds	Tons
Contaminates	61	5,646.55	2.82
Corrugated Cardboard	7	647.96	0.32
Mixed Paper	25	2,314.16	1.16
Glass	12	1,110.80	0.56
#1 PET	2	185.13	0.09
#3-#7 Plastic Bottles	1	92.57	0.05
#2 HDPE Colored Bottles	1	92.57	0.05
Aluminum Cans	2	185.13	0.09
Steel Cans	1	92.57	0.05
#2 HDPE Natural Bottles	1	92.57	0.05
Scrap Metal	0	0.00	0.00
<b>Total Pounds</b>	<b>113</b>		

**Notes:**

Contaminates consisted of plastic bags, containers with food still inside, styrofoam, foil, food wrappers, chip bags, to go cups, paper towels/napkins, baby diapers, food waste, pizza boxes, hardback books

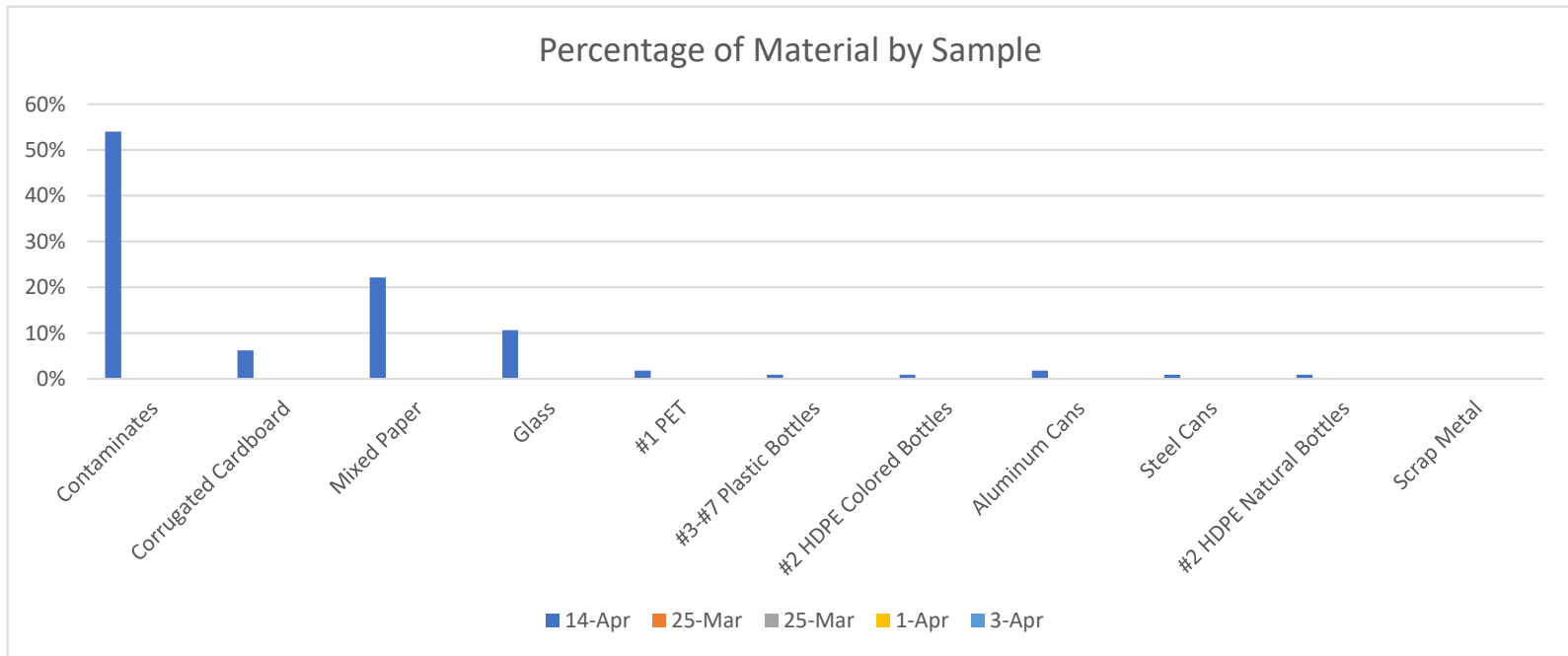
Total Load	5.23	10,460
	Tons	Pounds

Wellington Breakdown	
Contaminates	54%
Corrugated Cardboard	6%
Mixed Paper	22%
Glass	11%
#1 PET	2%
#3-#7 Plastic Bottles	1%
#2 HDPE Colored Bottles	1%
Aluminum Cans	2%
Steel Cans	1%
#2 HDPE Natural Bottles	1%
Scrap Metal	0%





Village of Wellington Waste Audits in Pounds					
Material	14-Apr	25-Mar	25-Mar	1-Apr	3-Apr
Contaminates	61	0	0	0	0
Corrugated Cardboard	7	0	0	0	0
Mixed Paper	25	0	0	0	0
Glass	12	0	0	0	0
#1 PET	2	0	0	0	0
#3-#7 Plastic Bottles	1	0	0	0	0
#2 HDPE Colored Bottles	1	0	0	0	0
Aluminum Cans	2	0	0	0	0
Steel Cans	1	0	0	0	0
#2 HDPE Natural Bottles	1	0	0	0	0
Scrap Metal	0	0	0	0	0
Total Pounds	113	0	0	0	0



## Village of Wellington Audits

Material	14-Apr	25-Mar	25-Mar	1-Apr	3-Apr
Contaminates	54%	#DIV/0!	#DIV/0!	#DIV/0!	#DIV/0!
Corrugated Cardboard	6%	#DIV/0!	#DIV/0!	#DIV/0!	#DIV/0!
Mixed Paper	22%	#DIV/0!	#DIV/0!	#DIV/0!	#DIV/0!
Glass	11%	#DIV/0!	#DIV/0!	#DIV/0!	#DIV/0!
#1 PET	2%	#DIV/0!	#DIV/0!	#DIV/0!	#DIV/0!
#3-#7 Plastic Bottles	1%	#DIV/0!	#DIV/0!	#DIV/0!	#DIV/0!
#2 HDPE Colored Bottles	1%	#DIV/0!	#DIV/0!	#DIV/0!	#DIV/0!
Aluminum Cans	2%	#DIV/0!	#DIV/0!	#DIV/0!	#DIV/0!
Steel Cans	1%	#DIV/0!	#DIV/0!	#DIV/0!	#DIV/0!
#2 HDPE Natural Bottles	1%	#DIV/0!	#DIV/0!	#DIV/0!	#DIV/0!
Scrap Metal	0%	#DIV/0!	#DIV/0!	0%	#DIV/0!

<b>Residual Average</b>
#DIV/0!

Percentage of Contaminates by Sample

